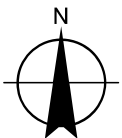
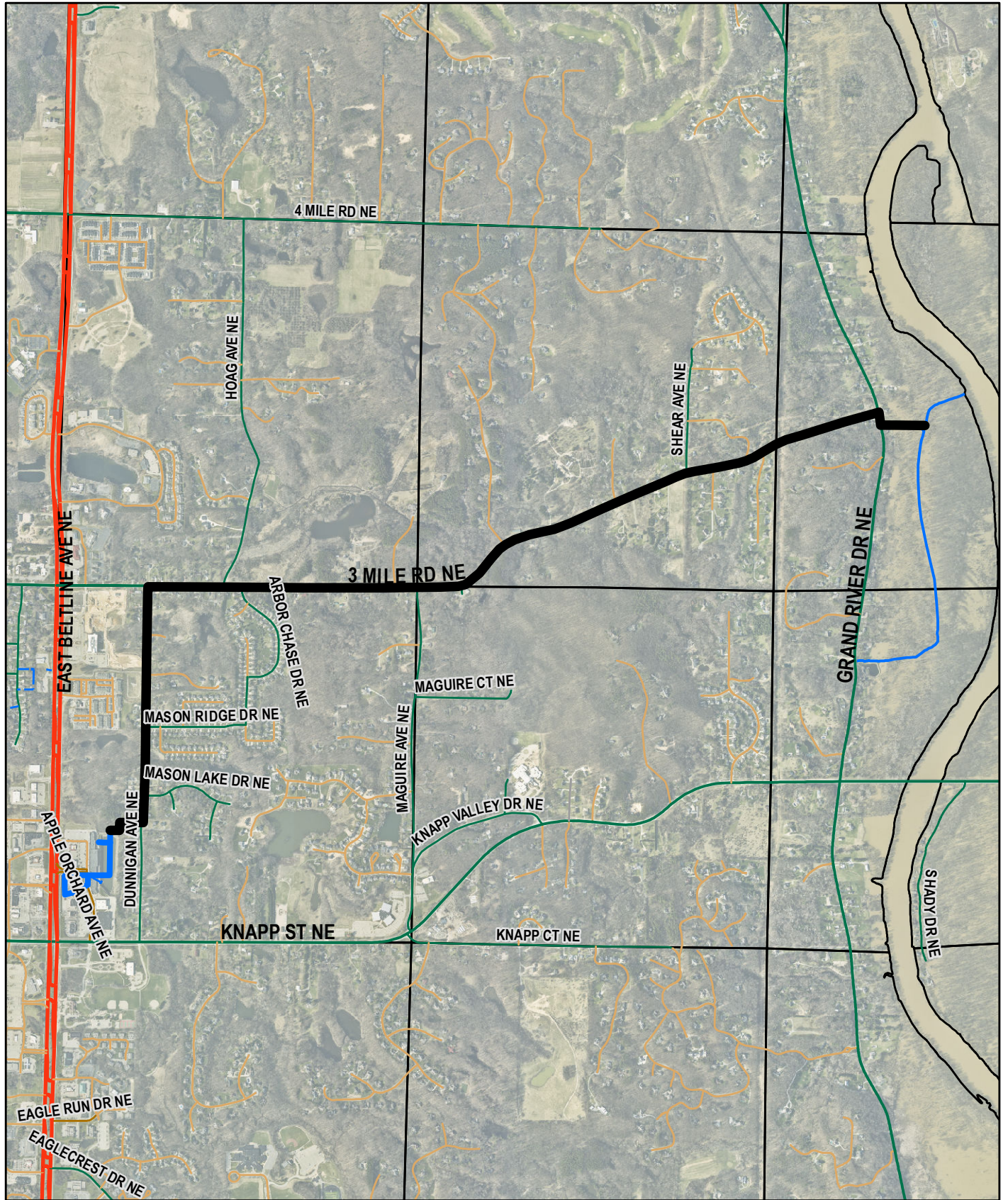


Page Scale set for printing
to 8.5x11





KNAPPS CORNER DRAIN
Watershed
Boundary

City of Grand Rapids
Grand Rapids Township
Kent County, MI



Page Scale set for printing
to 8.5x11

-  Knapp's Corner Drain Outlet
-  Knapps Corner Drain and Branches



KNAPPS CORNER DRAIN Proposed Outlet Route

City of Grand Rapids
Grand Rapids Township
Kent County, MI